

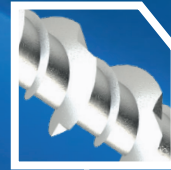
OPTIMAX[®]

OPTIMUM DESIGN, MAXIMUM PERFORMANCE

DECLARATION OF PERFORMANCE



Torx Drive
Maximum torque transfer



Self-drilling
Wide, Deep Thread



Razor Sharp Point
No pre-drilling in
timber and plasterboard



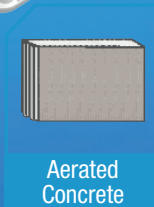
Maxtect
Anti-corrosion Coating



Uncracked
Concrete



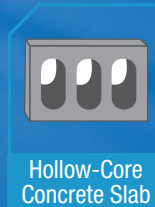
Lightweight
Concrete



Aerated
Concrete



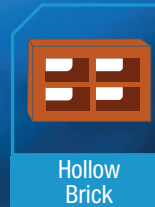
Sand-Limestone
Solid



Hollow-Core
Concrete Slab



Perforated
Sand-Limestone



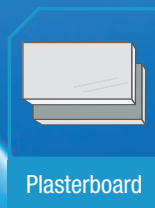
Hollow
Brick



Solid Brick
Masonry



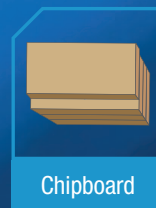
Natural
Stone



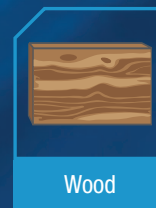
Plasterboard



Plaster
Block



Chipboard



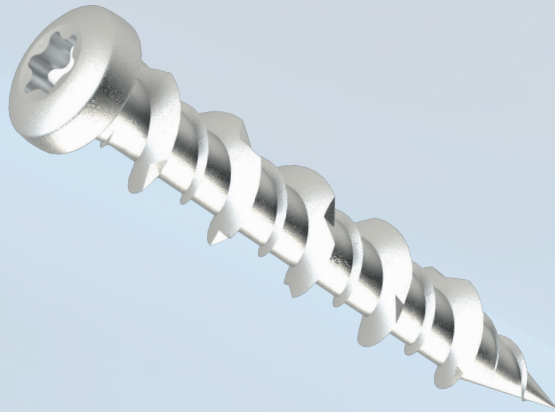
Wood

WALLBITE NO PLUG FIXING SCREW

DECLARATION OF PERFORMANCE

in accordance with the Construction Products Regulations

Release: 001



Product Type: Optimaxx Wallbite No Plug Fixing Screw

Material: C1022

Specifications: Coarse thread, fixing free (up to 5.5 mm drilled hole may be required)

**Manufacturer/
Importer:** ROYD
Saxon House,
23 Springfield Lyons Approach,
Springfield,
Chelmsford,
CM2 5LB

**Notified
Testing Body:** Zavod za gradbeništvo
Slovenije,
Dimičeva ulica 12 1000 Ljubljana

Tension tests in concrete were performed according to method defined in EOTA TR 048, Paragraph 3.3.1.

Tension tests in gypsum plasterboards and plywood boards were performed according to method defined in EN 1382:2016, Paragraph 6.2.

Shear tests in concrete were performed according to method defined in EOTA TR 048, Paragraph 3.6.1.

Shear tests in gypsum plasterboards and plywood boards were performed according to modified method defined in EOTA TR 048, Paragraph 3.6.1. Modification can be identified in type of base material. EOTA TR 048 defines only tests of fasteners in concrete.

ROYD No. 10345480

DECLARATION OF PERFORMANCE

in accordance with the Construction Products Regulations

Release: 001

Characteristic pull-out and shear resistance for screw anchor C1022

CHARACTERISTIC VALUE IN CONCRETE C20/25

Thread diameter	Embedment depth	Characteristic resistance	
		Tensile - N	Shear - V
d_{nom} (mm)	h_{nom} (mm)	(kN)	(kN)
6,5	20	1,28	1,89
	25	2,29	3,56

CHARACTERISTIC VALUES IN DRYWALL AND PLYWOOD

d_{nom} (mm)	One layer gypsum plasterboards - 12,5 mm		Double layer gypsum plasterboards - 25 mm		Plywood - 12,5 mm	
	Tensile - N	Shear - V	Tensile - N	Shear - V	Tensile - N	Shear - V
	(kN)	(kN)	(kN)	(kN)	(kN)	(kN)
6,5	0,12	0,84	0,18	1,06	0,98	2,23

Signed By:



Name: Stuart Atkins

Position: Quality & Compliance Manager

Release Date: 06/01/2023

Test Date: 09/12/2020

Saxon House, 23 Springfield Lyons Approach, Springfield, Chelmsford CM2 5LB
Reg: 10345480

ROYD No. 10345480